

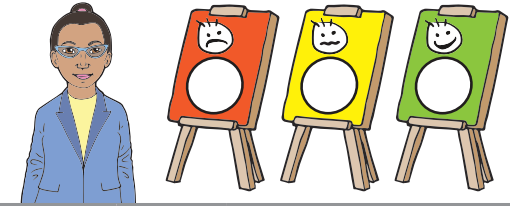
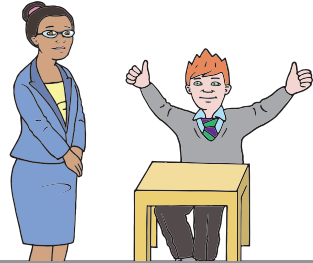
Practice Sheet

Term 3 Set 1 Week 3

Name Date

Spelling patterns **silent k, w, b, t, h, s; extension;** word list

I presume that your thumbs-up sign means you know the answer, Sprout?



Spellings	Write	Write	Cover and write	Cover and write
knot				
answer				
thumb				
thistle				
ghost				
debris				
doubt				
rhinoceros				
symbol				
system				

Total /10

